



Dudhi Gypsum (Brick Solution)

Moisture Resistant One Coat Gypsum Plaster

Description



Dudhi Gypsum (Brick Solution) (Moisture Resistant) is a one coat plaster specifically designed to provide protection in wet areas like bathroom, kitchens, basement, garages, balconies, parking podium etc. It provides extra protection with low absorption of moisture in air or from surface giving excellent results in skirting area application with problems arising out of capillary action and efflorescence. It can be directly used over backgrounds like bricks, blocks, RCC etc and provides a smooth inert, high-quality surface to internal walls and ceilings and a durable base for application of decorative finishes.

Performance

Description	Sand Cement Plaster	Dudhi Plaster (POP)	Dudhi Gypsum (Brick Solution)
Direct Application (Brick/Block/RCC)	✓	X	✓
Line & Level	X	✓	✓
Time Saving	X	X	✓
Smooth Finish	X	✓	✓
Quality Assurance	X	✓	✓
Water Curing	✓	Does not Require	Does not Require
Shrinkage Cracks	✓	Does not Appear	Does not Appear
In-House Manufacturing	X	✓	✓

Standard Compliance

IS 2547 (Part I)-1976 for chemical characteristics

IS 2547 (Part II)-1976 for physical characteristics

HSN Code : 252020

GST : 5%

Certification:

- Conforms and Certified to IS 2547: Part 1 and 2 of “The Bureau of Indian Standard” as per licence number CML-8400019909
- Meets standards of Green Pro certification and qualifies as green product

दुद्धी इण्डस्ट्रीज प्राइवेट लिमिटेड

F-238,239, प्रथम तल, टावर - बी, पालम कॉरपोरेट प्लाजा, ब्लॉक -C2 पालम विहार, गुरुग्राम - 122 001 (हरियाणा)
t 0124-4830680, 9560393000, 9560393009 e info@dudhi.in w www.dudhi.in

फैक्टरी I : M.No.- 56/4, Chak 6PRM, पुगल रोड, दनतोर, तहसील - खाजुवाला, जिला - बीकानेर - 334004 (राजस्थान)
फैक्टरी II : खसरा नं. - 60, नौरंगपुर - सिलाना रोड, गाँव - सिलाना, तहसील - झज्जर, जिला - झज्जर - 124103 (हरियाणा)

Features & Benefits

Eliminates two-step process of Sand Cement Plaster and POP punning

Doesn't require water curing

No shrinkage cracks

Non-combustible (when tested in accordance with BS: 476: part 4:1970), therefore a good form of thermal protection to the building structure.

Use of light weight aggregates in the plaster mix help to improve Low thermal conductivity (0.25 W/m²K) as compared to Sand Cement Plaster (0.72 W/m²K) ** keeps room cooler in summer and warmer in winter; saving in energy cost

The water absorption as per DIN EN 520 is less ≤10%

Excellent Capillary

Water absorption coefficient test method – BS EN 1015-18.



*Above parameters are tested under lab conditions. Actual performance depends on site usage, conditions and working.

Technical & Physical Parameters

Dry Bulk Density	770 Kg/m ³ (Max)
Wet Bulk Density	1.35 -1.5 g/cm ³
Water To Powder Ratio	1:1.25
Setting Time	20-25 min
Compressive Strength N/mm ²	3-6
Ingredients	Calcium Sulphate Hemihydrate + Light weight aggregates like "Vermiculite" and special additives.

Chemical Composition

Calcium Sulphate Hemihydrate: CaSO₄. ½ H₂O

Drying Type

Setting

Identification & Packing

Dudhi Gypsum (Brick Solution) (Moisture Resistant) is packed in PP bags. The outer layer of the bag is printed with the product image, batch number, date of manufacturing, correspondence address and application instructions.

Available Sizes

25 kg and 40 kg

Shelf-life time

Approx. 6 months from the date of manufacturing when stored in dry conditions.

Consumption of Material

Consumption Per mm/ Per Sq. Ft.- 0.100 kg.

Coverage 13mm Thickness 30 sq-ft/40 kg bag, 19 sq-ft/25 kg bag

दुद्धी इण्डस्ट्रीज प्राइवेट लिमिटेड

F-238,239, प्रथम तल, टावर - बी, पालम कॉरपोरेट प्लाजा, ब्लॉक -C2 पालम विहार, गुरुग्राम - 122 001 (हरियाणा)
☎ 0124-4830680, 9560393000, 9560393009 ✉ info@dudhi.in 🌐 www.dudhi.in

फैक्टरी I : M.No.- 56/4, Chak 6PRM, पुगल रोड, दनतोर, तहसील - खाजुवाला, जिला - बीकानेर - 334004 (राजस्थान)
फैक्टरी II : खसरा नं. - 60, नौरंगपुर - सिलाना रोड, गाँव - सिलाना, तहसील - झज्जर, जिला - झज्जर - 124103 (हरियाणा)

Storage & Handling



Dudhi Gypsum (Brick Solution) (Moisture Resistant) is supplied in 40Kg bags. The dimensions of the bag ensure that a well-filled appearance is presented when filled and the bags can be stacked on a pallet in a stable and well-stacked array. Bags should be stored dry, as absorption of water shortens the setting

time, causes set lumps to form in the bags and may reduce the strength of the set plasterwork. No hooks or any sharp tools should be used to carry bags from one location to another.

Application Areas:

Dudhi Gypsum (Brick Solution) one coat plaster can be applied on most internal surfaces like Bricks, Blocks & RCC (Concrete) surfaces



Background Preparation

Surfaces should be completely clean, reasonably dry, protected from the direct exposure from weather and suitable for the chosen specification. In addition, before plastering concrete backgrounds, ensure that any mould oil or Concrete Curing Agent (other agents) present are removed from the surface. No-fines concrete does not require wetting prior to plastering. Plaster should not be applied onto a 'green' background or when any free water is visible. Clean water should be applied 5-10 minutes before plaster application to control the suction. In-situ or pre-cast concrete which are exceptionally smooth or having low suction will require pre-treatment with **Dudhi Plaster Bond** bonding agent.

Mixing

Dudhi Gypsum (Brick Solution) (Moisture Resistant) is pre-mixed with aggregate and only clean water needs to be added to prepare it for use. Mixing should be carried out in a clean tray or bucket. Excessive mechanical mixing should be avoided. Tools and water used in mixing must be clean. Contamination from previous mixes can shorten the setting time and in turn reduce the strength of the plaster when set. Water to plaster ratio (1 part of water: 1.25 part of plaster by weight) should be maintained to have good cohesive workable mix. Prepare plaster mix as much as required depending upon the immediate scope of work. Once the mix has begun to set, additional water is not to be added, as performance properties of plaster will get altered, thus affecting workability, cohesiveness, adhesion properties and strength.

दुद्धी इण्डस्ट्रीज प्राइवेट लिमिटेड

F-238,239, प्रथम तल, टावर - बी, पालम कॉरपोरेट प्लाजा, ब्लॉक -C2 पालम विहार, गुरुग्राम - 122 001 (हरियाणा)
☎ 0124-4830680, 9560393000, 9560393009 ✉ info@dudhi.in 🌐 www.dudhi.in

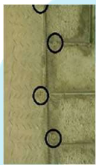
फैक्टरी I : M.No.- 56/4, Chak 6PRM, पुगल रोड, दनतोर, तहसील - खाजुवाला, जिला - बीकानेर - 334004 (राजस्थान)
फैक्टरी II : खसरा नं. - 60, नौरंगपुर - सिलाना रोड, गाँव - सिलाना, तहसील - झज्जर, जिला - झज्जर - 124103 (हरियाणा)

Application



Dudhi Gypsum (Brick Solution) (Moisture Resistant) should be applied with firm pressure, built out to the required thickness, and ruled to an even surface and left as an undercoat to form a key for finish coat. A thin plaster mix is made and applied as a finish coat to provide smooth surface. It can be applied to an average thickness range of 6-15 mm on walls in one coat and up to 10 mm on ceilings. For thickness above this range, material needs to be applied in two coats. The thickness should not increase to more than 30 mm (average thickness) on walls and 20 mm (average thickness) on ceiling. After complete drying for usually 72 hrs (depends upon thickness and weather conditions) the plain smooth leveled surface is ready for painting.

Precautions



- Dissimilar expansion and contraction of RCC and brick / stone masonry could cause stresses and at times separation. To reduce the separation cracks, use of 145 GSM glass fiber mesh (at the junction) is recommended.
- It is not suitable for use in long continuously damp or severely humid conditions
- If Gypsum Plaster is to be applied on RCC surfaces with the thickness of the application being more than 15 mm then It is to be applied only when moisture is very low and the temperature is more than 10 degrees Celcius because RCC construction has almost negligible porosity as compared to NON-RCC SURFACES. Hence it cannot absorb water.

External Plaster Work Care

In case **Dudhi Gypsum (Brick Solution)** is applied on internal walls but the exterior cement plaster work of the same wall is pending then Cement Plaster work must be completed prior to painting of the internal walls. Any seepage of moisture during curing from outside will from escape surface of the Gypsum plaster. Please note that the escaping water from **Dudhi Gypsum (Brick Solution)** may leave some green spots on the surface which can be easily removed with the help of sand paper and then Paint work of the internal walls should be done.

It is not suitable for use in long continuously damp surfaces. For application make the substrate dry and then application to be made.

The information herein should not be read in isolation as it is meant only as guidance for the user, who should always ensure that they are fully conversant with the products and systems being used and their subsequent installation prior to the commencement of work.

दुद्धी इण्डस्ट्रीज प्राइवेट लिमिटेड

F-238,239, प्रथम तल, टावर - बी, पालम कॉरपोरेट प्लाजा, ब्लॉक -C2 पालम विहार, गुरुग्राम - 122 001 (हरियाणा)
 ☎ 0124-4830680, 9560393000, 9560393009 ✉ info@dudhi.in 🌐 www.dudhi.in

फैक्टरी I : M.No.- 56/4, Chak 6PRM, पुगल रोड, दनतोर, तहसील - खाजुवाला, जिला - बीकानेर - 334004 (राजस्थान)
 फैक्टरी II : खसरा नं. - 60, नौरंगपुर - सिलाना रोड, गाँव - सिलाना, तहसील - झज्जर, जिला - झज्जर - 124103 (हरियाणा)